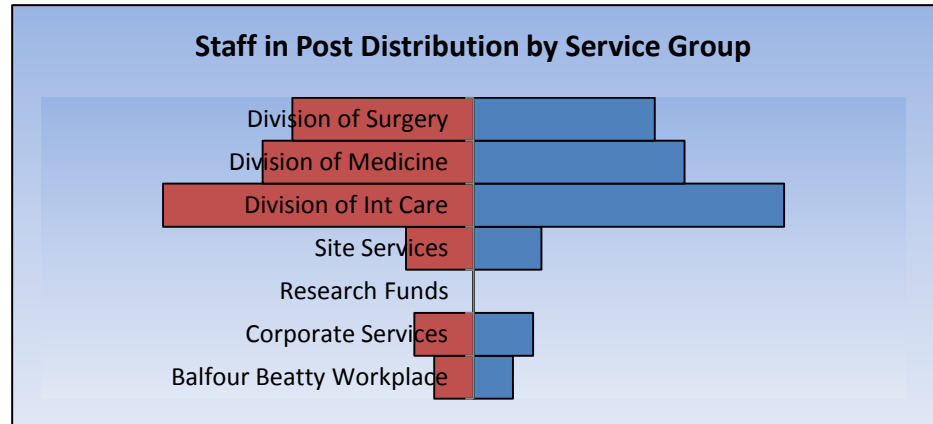
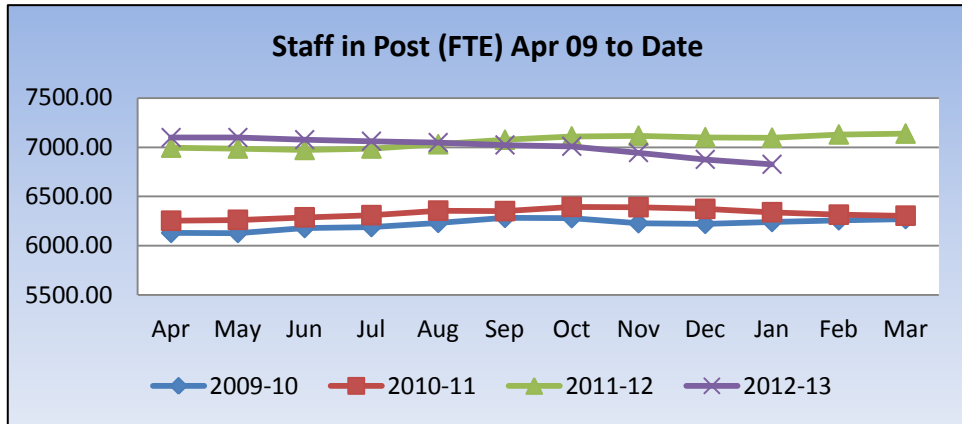
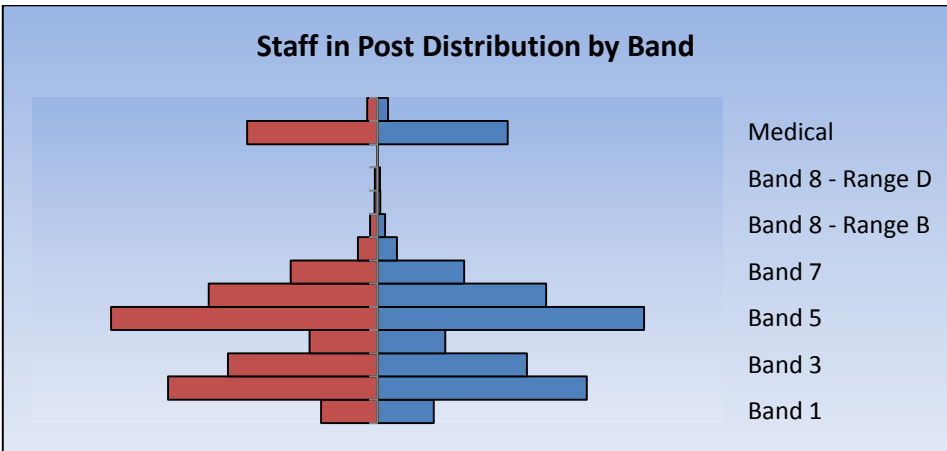
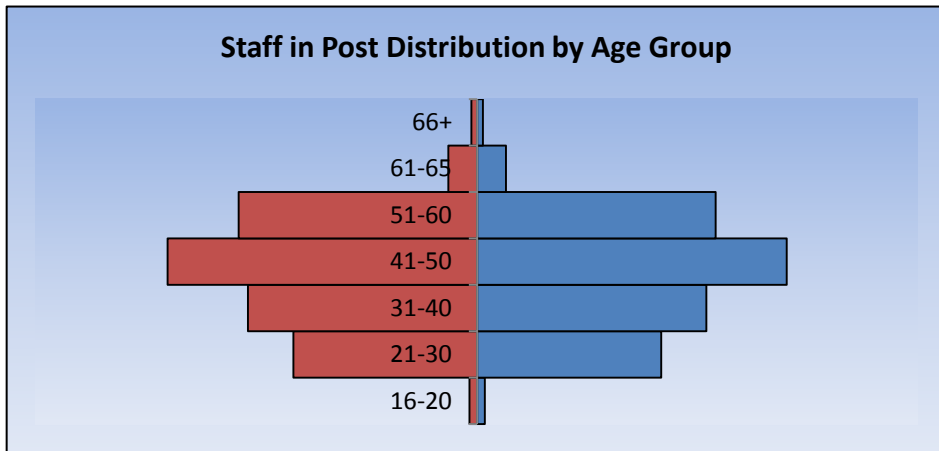


Trust Status Quo – January 2013



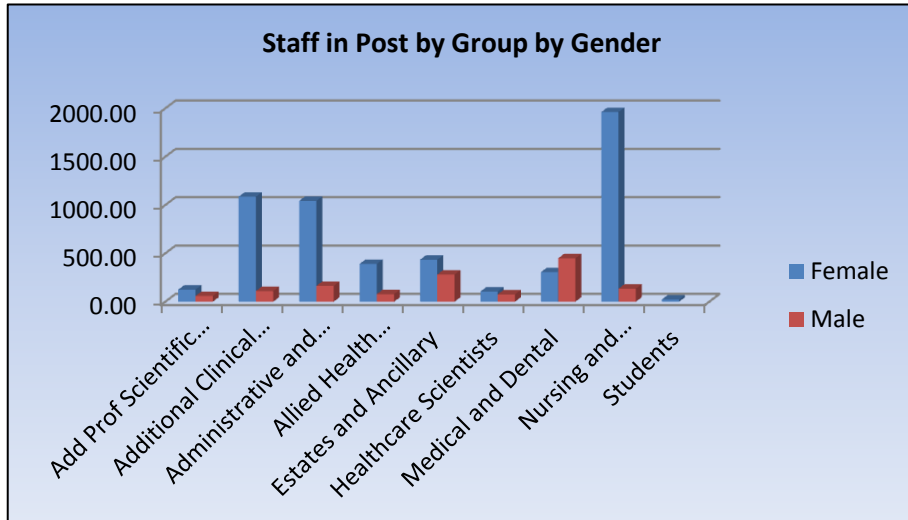
The above chart shows the staff in post year on year since April 2009 and the changes which have occurred. This excludes bank and agency staff.

The above chart shows the staff in post distribution by service group. The three largest are the three clinical service groups.

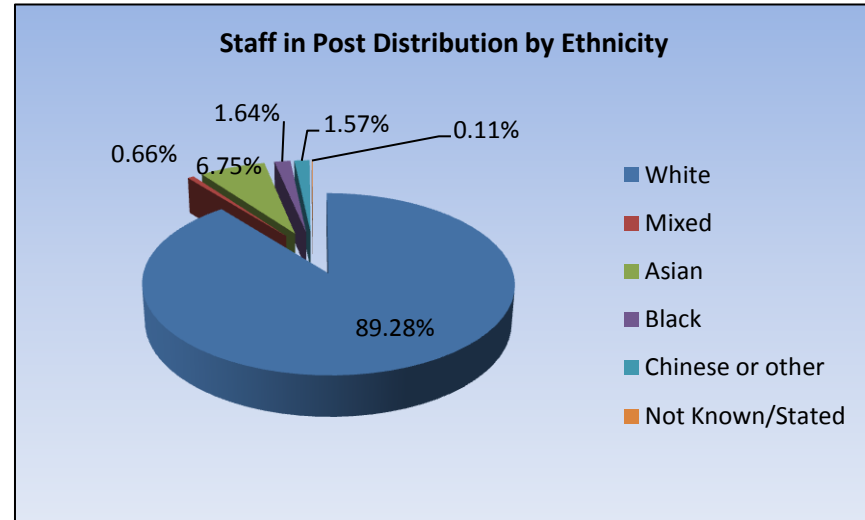


The above chart shows the distribution of staff across the Trust by age group. The main age group is that of 41-50 and this has been the case for the past few years.

The above chart shows the staff distribution by band. This includes all service groups.



The above chart shows the staff in post distribution by staff group and Gender. The Trust is made up of predominantly females with the highest proportion being in Nursing and Midwifery.



The above chart shows the staff distribution by ethnicity. The BME element stands at 10.61%